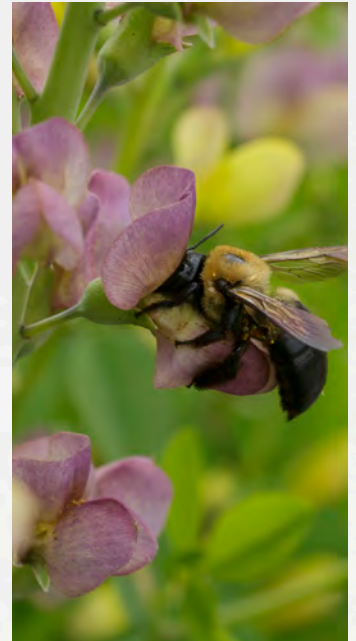


SPIRES START YELLOW
*Flowers emerge yellow
as the spires open.*

BAPTISIA 'AURORA'



**TALL SPIRES SHOW
OFF THE TRAVELING COLOR**
*'Aurora's' color-changing spires are
unique among Baptisia. The buds change
from full yellow to full purple.*



BRED BY A BEE
*'Aurora' establishes itself in a variety of
climates. Wild swings between summer
and winter do not bother this plant with a
lifespan that measures into the decades.*

**FLOWERS SLOWLY
TURN PURPLE**
*As the yellow blossoms open
up, purple starts to suffuse
into the pea-style flowers.*

**A NOVEL INNOVATION
IN BAPTISIA**
*Introduced by Creek Hill Nurseries, 'Aurora' blooms
in late spring and grows to the size of a shrub with
color-shifting spires rising above waist level.*



A HANDSOME HABIT
*'Aurora' has a tall fan-shaped style of growth
that holds the spires tall above the foliage.*

BAPTISIA 'AURORA'

A CREEK HILL INTRODUCTION

Bred by a bee, this chance seedling showed up in our trial garden and produced a beautiful new color-shifting Baptisia we call 'Aurora'. Each flower emerges warm yellow and slowly becomes suffused with rose-purple as it ages. This creates a natural contrast across a whole shrub's worth of blooms, just as beautiful on the plant as they are in a vase.

A SPRING POWERHOUSE

'Aurora' blooms in late spring with other floral powerhouses like Peonies, Roses, and Bearded Iris. A dramatic addition to the perennial border, it's the size of a shrub with long spires rising above waist level. Its colors are unique, opening yellow then saturating to a deep purple.

A NATIVE'S JOB TO DO

Baptisia works hard in the garden. As a North American native, it is bulletproof and pest-resistant once established. Highly drought tolerant, its long tap roots punch through heavy clay soils and reach down deep, pulling up minerals and shedding them in the fall leaves.

IMPROVES THE SOIL
Since Baptisia is a legume, the roots fix nitrogen from the air and add it to the soil.



**CREEK HILL
NURSERY**

CULTURAL SPECIFICATIONS

- Common Name: False Indigo
- Light: Full-Part Sun
- Height: 42-48"
- Zones 4-8
- PP# 35931

TAG DESCRIPTION

This yellow to purple bicolor is a Creek Hill introduction, found as a seedling in our own trial garden. Each flower emerges warm yellow and slowly becomes suffused with rose-purple as it ages. 'Aurora' has a remarkable habit for a Baptisia, with a stature that is more upright than wide. Flowers bloom on very tall spikes showing off the full color transition.



STRONG STEMS

'Aurora' has strong stems to support many tall spires.

